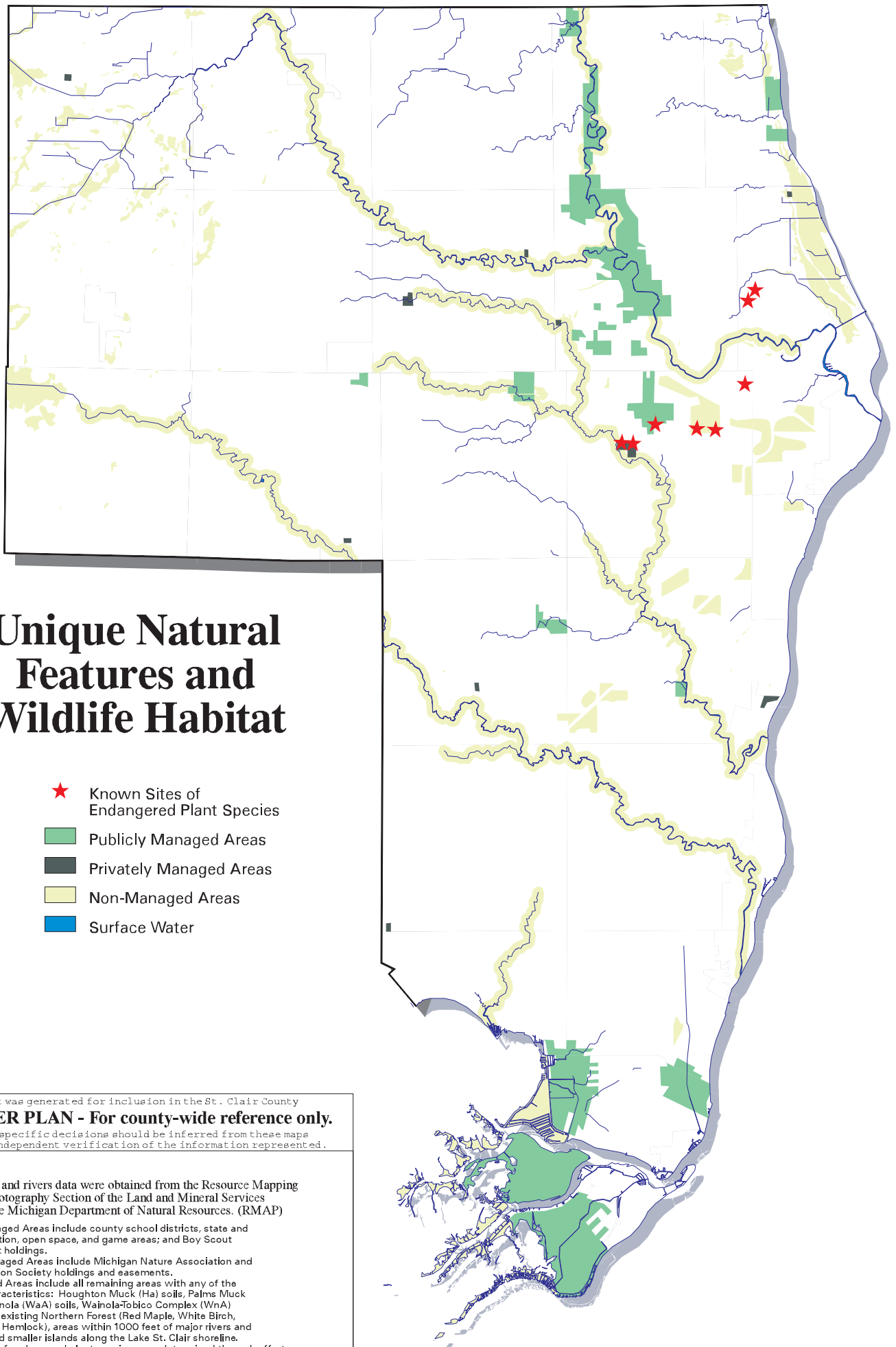


Unique Natural Features and Wildlife Habitat

- ★ Known Sites of Endangered Plant Species
- Publicly Managed Areas
- Privately Managed Areas
- Non-Managed Areas
- Surface Water



This plot was generated for inclusion in the St. Clair County
MASTER PLAN - For county-wide reference only.
 No site-specific decisions should be inferred from these maps
 without independent verification of the information represented.

Sources:

The shoreline and rivers data were obtained from the Resource Mapping and Aerial Photography Section of the Land and Mineral Services Division of the Michigan Department of Natural Resources. (RMAP)

*Publicly Managed Areas include county school districts, state and federal recreation, open space, and game areas; and Boy Scout and Girl Scout holdings.

*Privately Managed Areas include Michigan Nature Association and Detroit Audubon Society holdings and easements.

*Non-Managed Areas include all remaining areas with any of the following characteristics: Houghton Muck (Ha) soils, Palms Muck (Pa) soils, Wainola (WaA) soils, Wainola-Tobacco Complex (WnA) soils; areas of existing Northern Forest (Red Maple, White Birch, White Pine, or Hemlock), areas within 1000 feet of major rivers and tributaries, and smaller islands along the Lake St. Clair shoreline.

*Known Sites of endangered plant species were determined through efforts coordinated by the Metropolitan Planning Commission.