

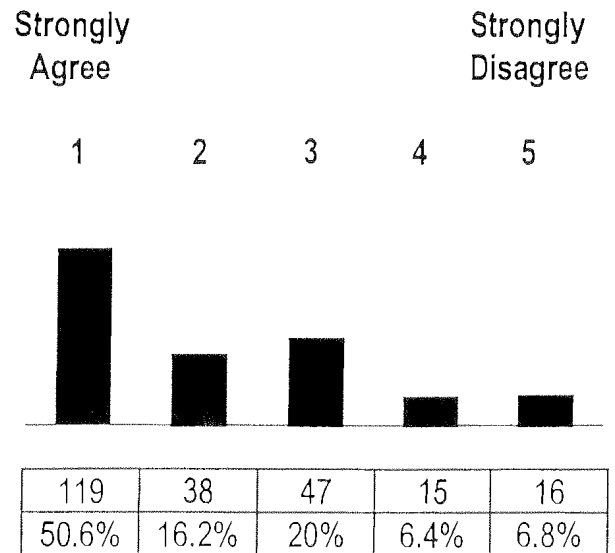
APPENDIX

Community Survey Results
Adjacent Community Master Plan Maps
Mussey Township Recreation Plan - Selected Chapters
Public Hearing Notice
Meeting Agenda
Minutes of Public Hearing
Transmittal Letter to County
County Review Letter
Amendment Information

NATURAL RESOURCES

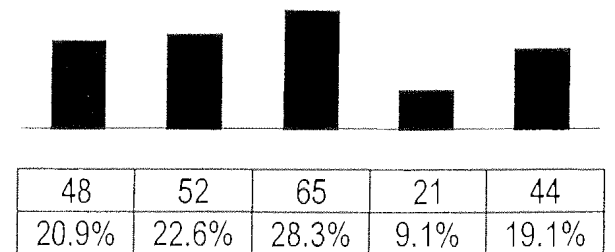
9. The Township should identify important wetlands, flood plains, woodlands, and other natural areas worthy of preservation in their natural state.

Total Response: 235



10. Property owners/developers should be given approval for higher development densities than currently permitted if they agree to preserve important environmental features.

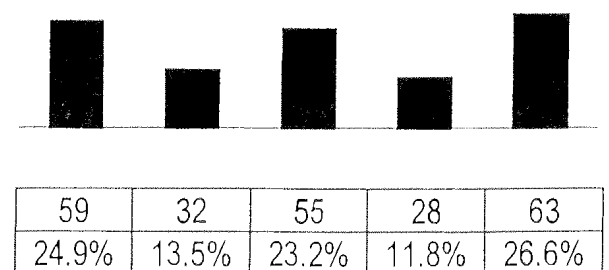
Total Responses: 230



RESIDENTIAL DEVELOPMENT & HOUSING

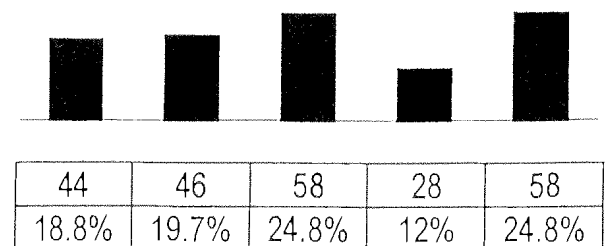
11. Mussey Township needs a reasonable mix of housing types--single-family homes, duplexes, apartments, mobile homes, etc.--at appropriate locations.

Total Responses: 237



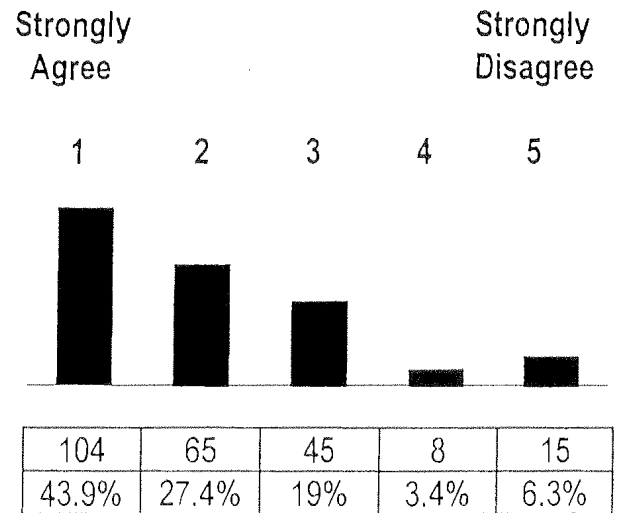
12. It is desirable to permit subdivisions to develop with somewhat smaller lots in exchange for more open space preservation.

Total Responses: 234



13. Efforts should be made to identify historical homes in Mussey Township so that they may be preserved.

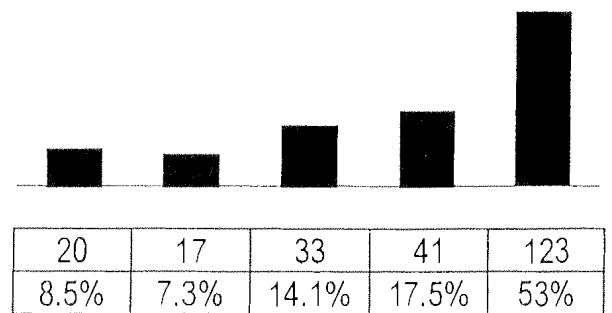
Total Responses: 237



COMMERCIAL AND INDUSTRIAL DEVELOPMENT

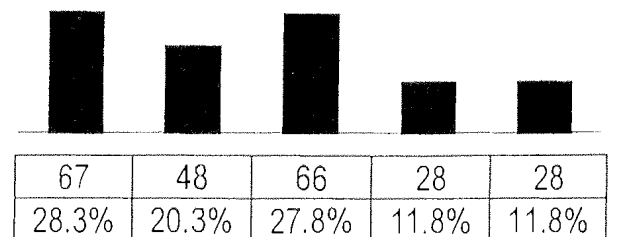
14. Existing shopping facilities and services in Capac adequately serve your shopping needs.

Total Responses: 234



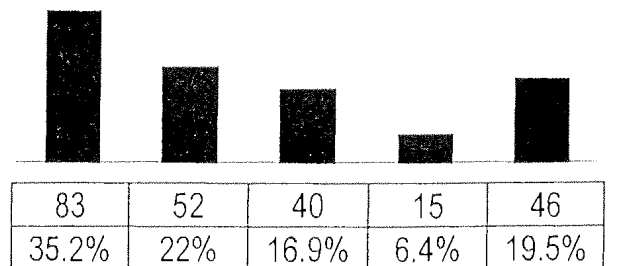
15. Imlay City provides most of your shopping needs.

Total Responses: 237



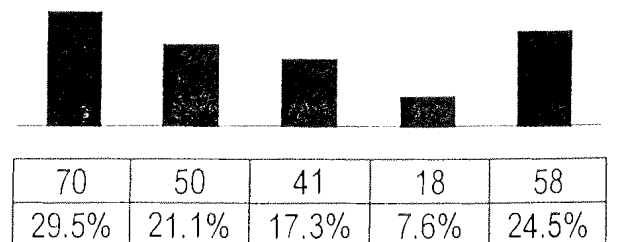
16. Mussey Township should encourage more commercial development.

Total Responses: 236



17. Mussey Township should encourage more industrial development.

Total Responses: 237

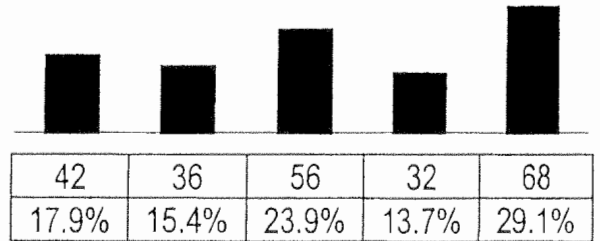


ROADS AND TRANSPORTATION

Strongly Agree 1 2 3 4 5 Strongly Disagree

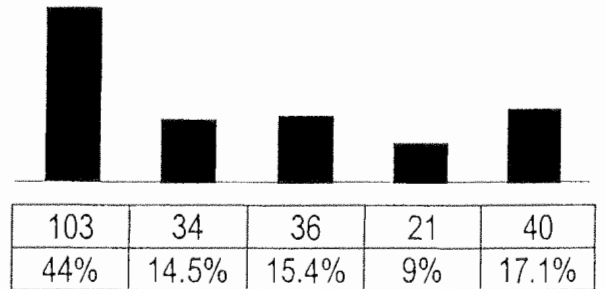
18. The Township's road network is adequately serving residents' transportation needs.

Total Responses: 234



19. More of the Township's roads need to be paved.

Total Responses: 234

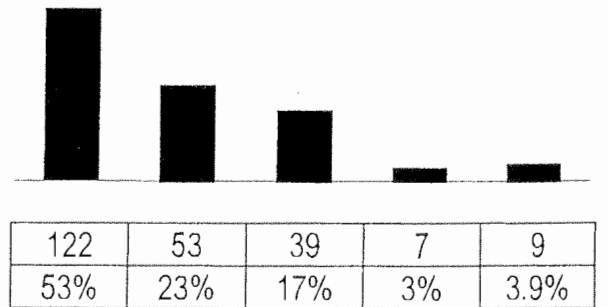


PUBLIC FACILITIES & SERVICES

The following services are adequate:

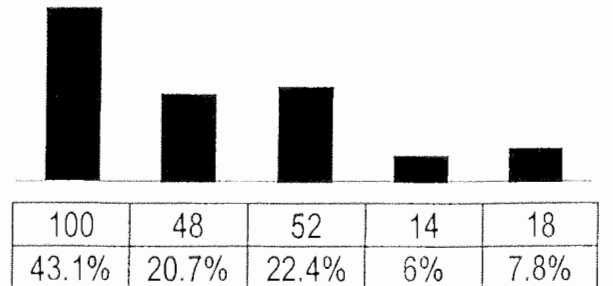
20. Fire Protection

Total Responses: 230



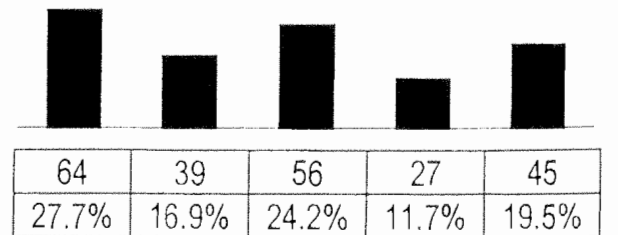
21. Police Protection

Total Responses: 232



22. Schools

Total Responses: 231

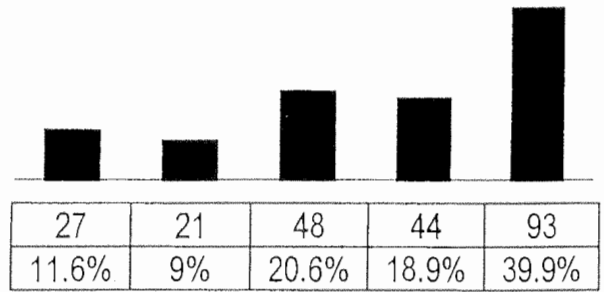


Strongly Agree Strongly Disagree

1 2 3 4 5

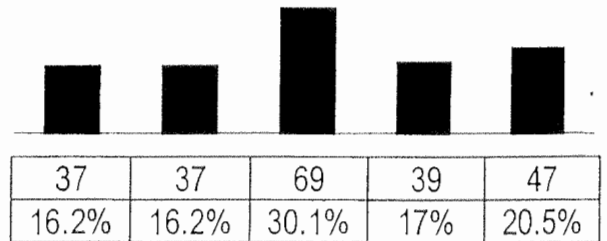
23. Road maintenance

Total Responses: 233



24. Surface Drainage

Total Responses: 229

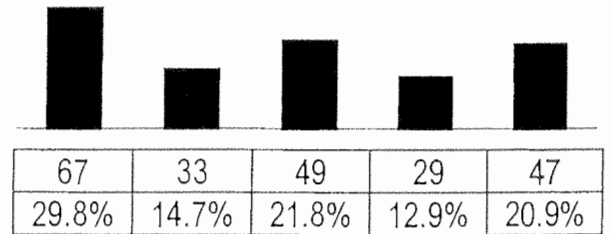


RECREATIONAL SERVICES AND ACTIVITIES

The following services are needed:

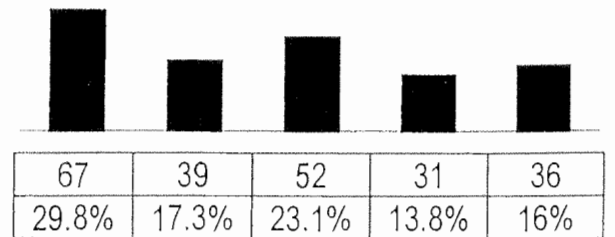
25. Picnic Areas

Total Responses: 225



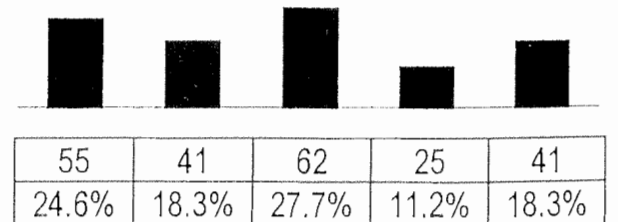
26. Playgrounds

Total Responses: 225



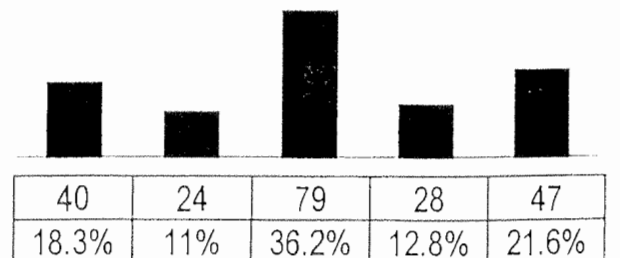
27. Baseball / Softball fields

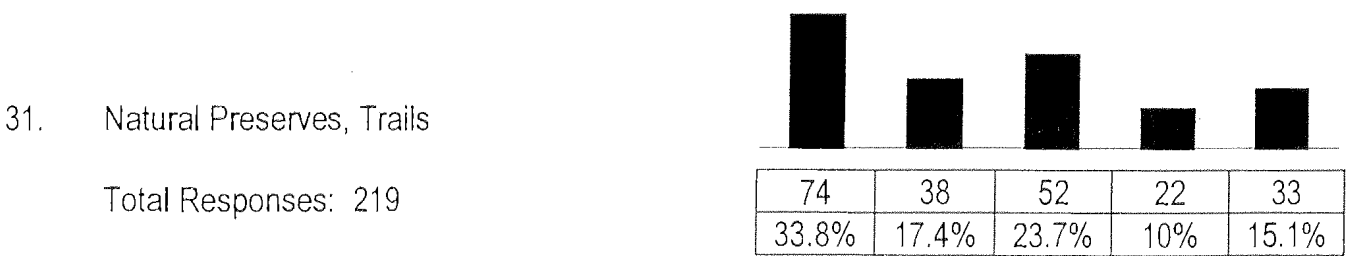
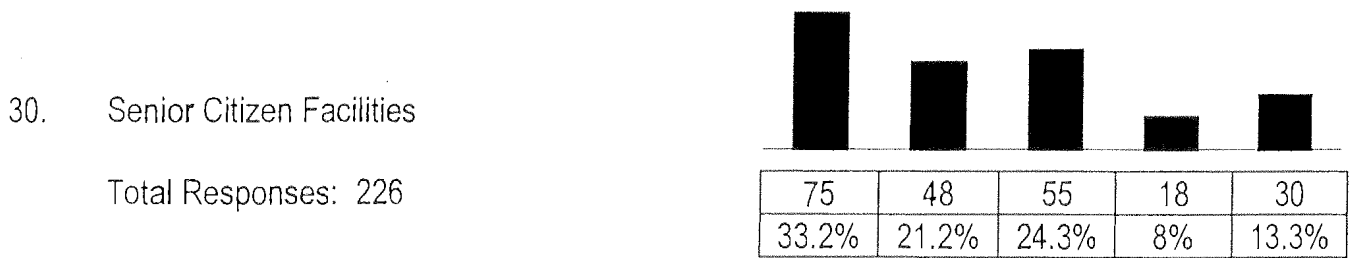
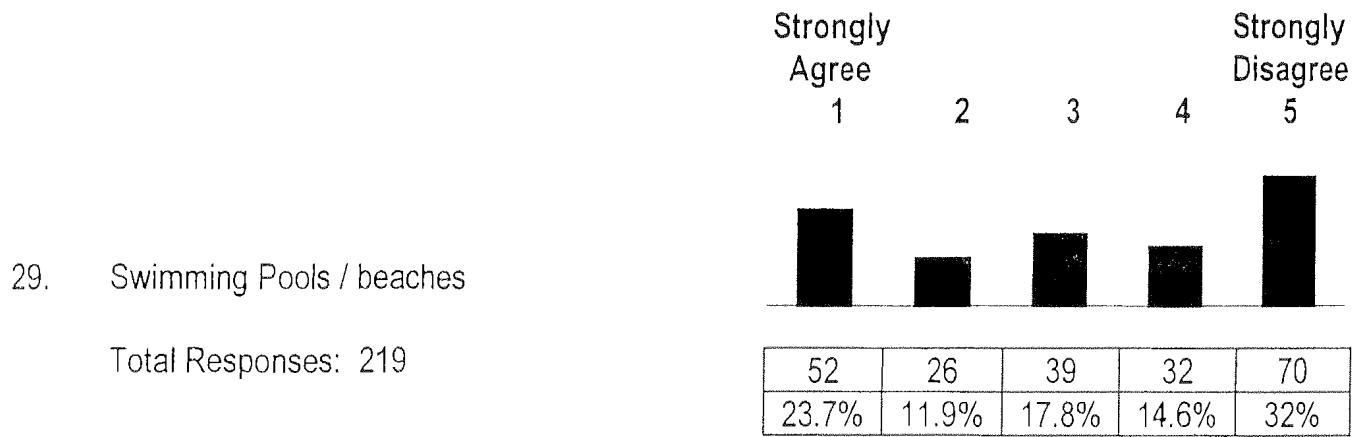
Total Responses: 224



28. Other athletic fields

Total Responses: 218



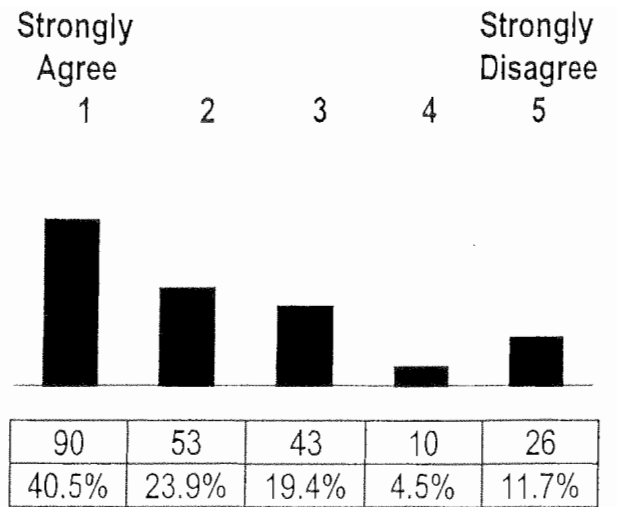


32. Other (Please Specify): _____

# of Responses	
5	Ice/Hockey Rink
4	Bike Trails
3	Bowling Alleys
3	Youth Activities
2	Shooting Range
2	Nature Trails
2	Roller Rink
2	Movie Theater
2	Park
1	Camping
1	Skiing Facility
1	Archery Target

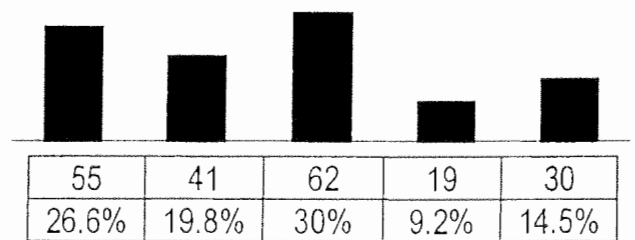
33. Youth recreation programs / leagues

Total Responses: 222



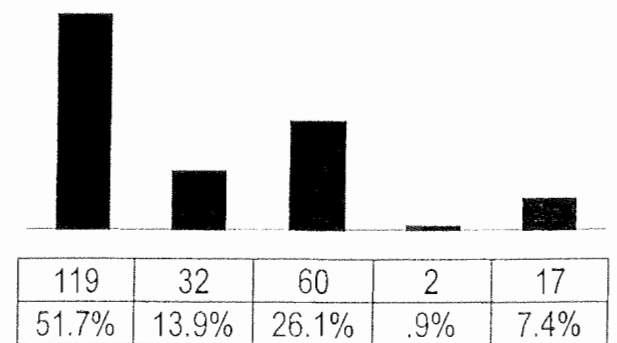
34. Adult recreation programs / leagues

Total Responses: 207



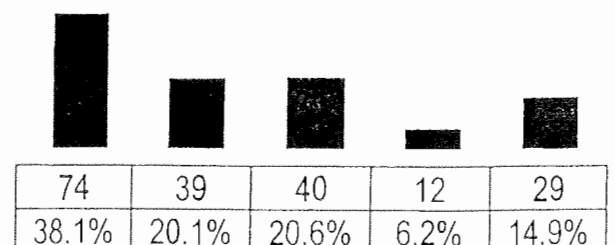
35. The Township should cooperate to develop recreational facilities and programs with:
(A) Capac

Total Responses: 230

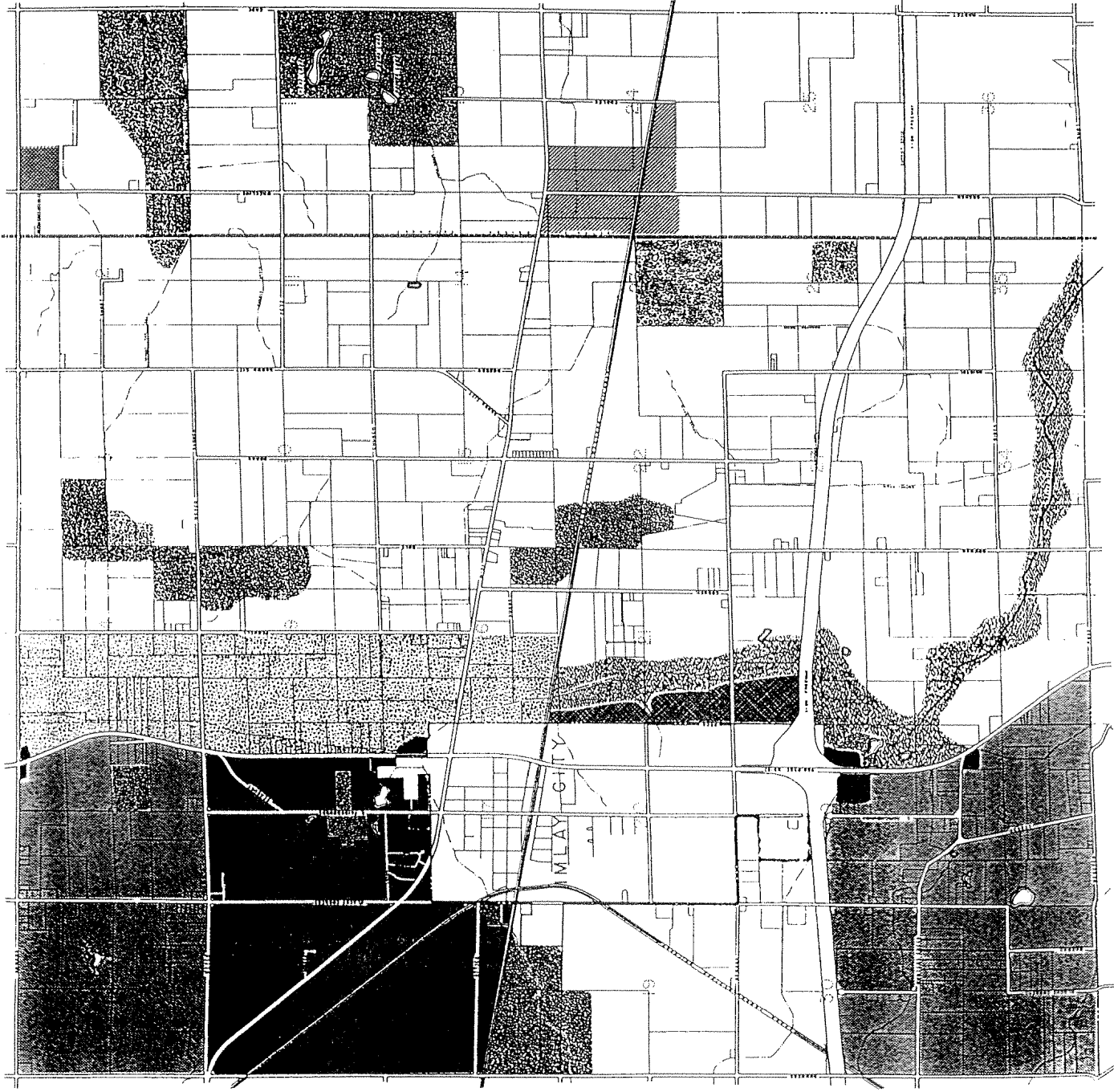


(B) Other Townships

Total Responses: 194



- PRIME AGRICULTURE
- IMPORTANT AGRICULTURE
- VERY LOW DENSITY RESIDENTIAL
- MODERATE DENSITY RESIDENTIAL
- COMMERCIAL
- INDUSTRIAL
- UTILITY USE
- UTILITY CORRIDOR
- FLOOD PRONE AREAS
- OPEN SPACE
- PUBLIC
- RECLAMATION
- SPECIAL PROJECT AREA



LAND USE PLAN

IMLAY TOWNSHIP
 LAPEER COUNTY, MICHIGAN
 IMLAY TOWNSHIP PLANNING COMMISSION






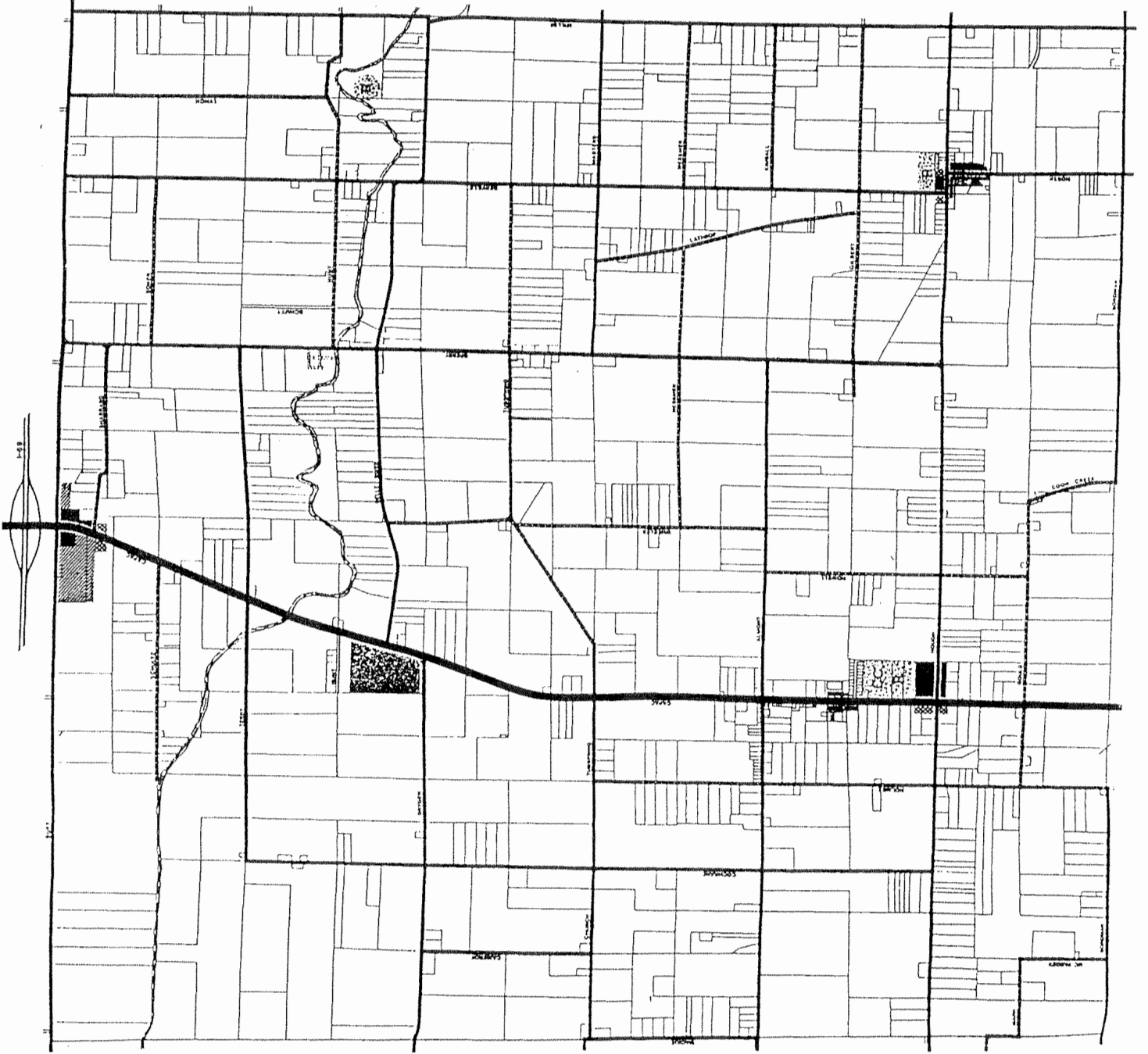
ADOPTED: MARCH 28, 2004

DAVID C. HINCHER, ACP
 Professional Land Planner, Planner



EMMETT TOWNSHIP
LAND USE PLAN

-  Agricultural-Preservation
-  Rural Residential
-  Industrial

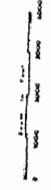


- RESIDENTIAL / AGRICULTURAL
- ◐ RESIDENTIAL
- COMMERCIAL
- ◑ OFFICE
- ◒ INDUSTRIAL
- ◓ TOWNSHIP FACILITIES
- ◔ CC CIVIC CENTER
- ◕ R RECREATION

- MAJOR ARTERIAL (150')
- MINOR ARTERIAL (120')
- COLLECTOR (86')

MASTER PLAN

BERLIN TOWNSHIP
 ST. CLAIR COUNTY, MICHIGAN
 BERLIN TOWNSHIP PLANNING COMMISSION
 May 2, 1991



DATE OF MAP: 11/15/90
 PREPARED BY: J. J. HARRIS
 COMMUNITY PLANNING & MANAGEMENT, P.C.
 UTICA, MICHIGAN